



Happy Farmer - (717) 844-5901

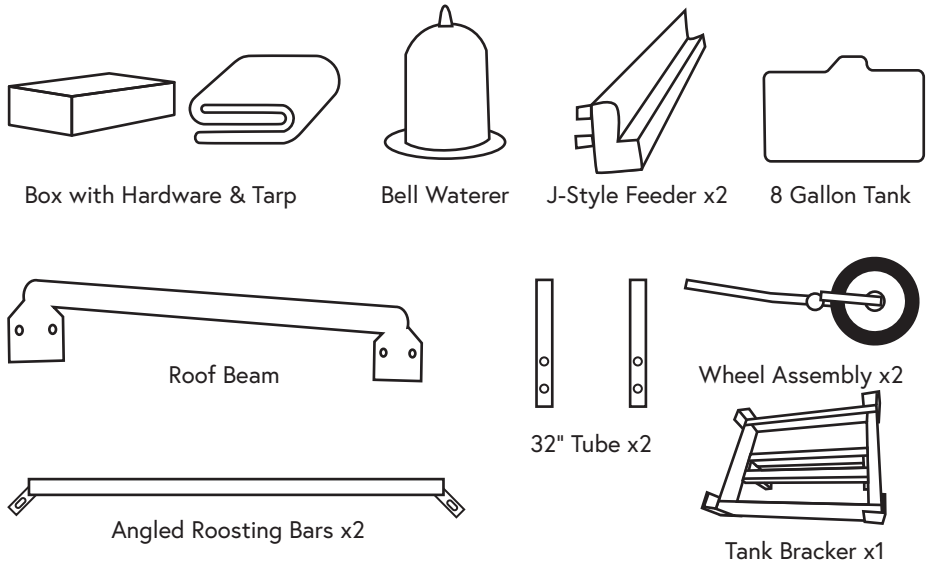
daniel@happyfarmer.store



**Scan for  
Video Instructions**

# MOBILE BROILER COOPS

## 9 X 8



Front Wall



Back Wall



Side Walls

## ASSEMBLY INSTRUCTIONS

**Step 1:** Layout coop walls on ground in open area, netting side up as netting should be installed on the inside of the coop. (Suggested 20' x 30' working area). Attach side wall front and back on each side with listed hardware. (See Figure 2). Stand up side walls and front wall. Attach with listed hardware.

*Parts needed: Front and Back Walls, Side Wall x2, Panel Hardware Bag.*

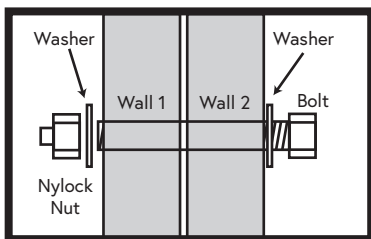


Figure 1

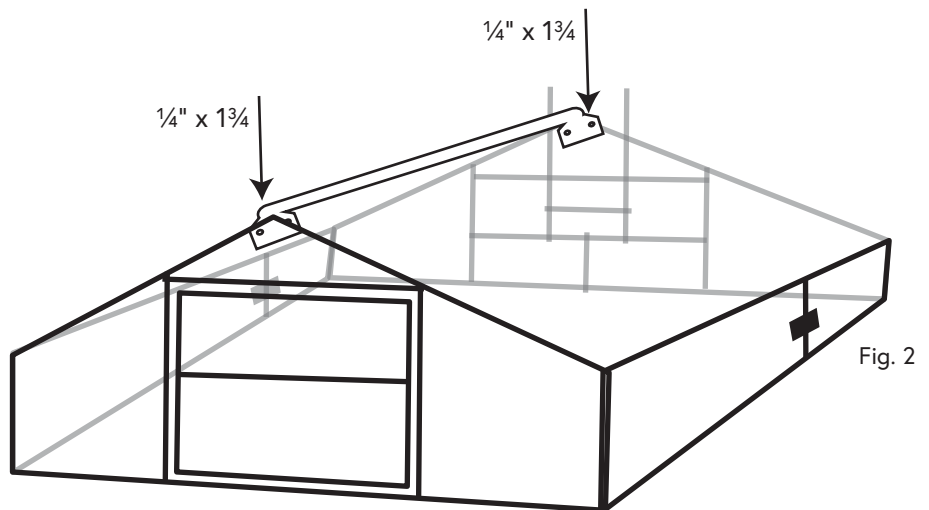
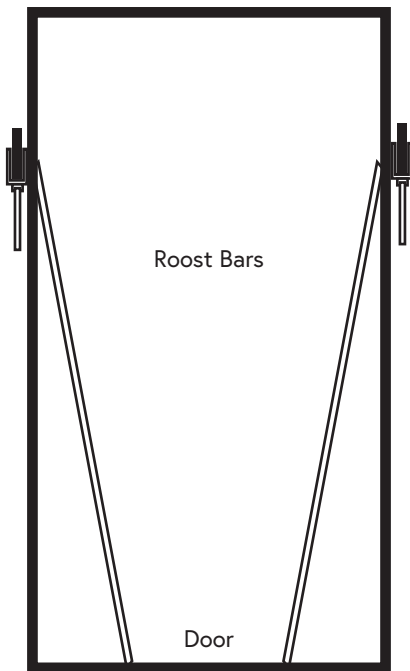


Fig. 2

Attach the Roof Beam to the appropriate spot on the walls.

*Parts Needed: Roof Beam x1, Peek & Roost Bar Hardware Bag*

## ASSEMBLY INSTRUCTIONS (CONT.)



Top View



Figure 4

When the roof is complete lay out the roost bars and attach to the sides. Attach the wheel assemblies to the outside of the coop. Make special note of the plastic washer. This should be between the assembly and the coop side (figure 4).

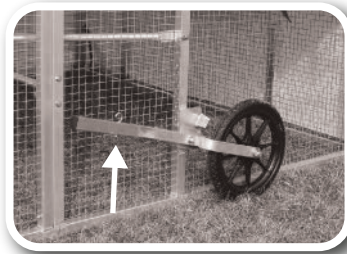


Figure 5

Chain is bolted to side panel with same bolt as roost bar. Attach hook to wheel assembly arm as shown in figure 5.

*Parts Needed: Roosting Bars x2, Wheel Assembly x 2, Peek & Roost Bar Hardware Bag*



32" Tubes bolt onto back panel. Slide tank bracket into top of tubes.



Tank Bracket in place; slides into the 32" tubes attached at rear wall.



Unfold tarp, lay out over coop and attach with bungie cords.

*Parts Needed: Tarp, Bungie cords.*